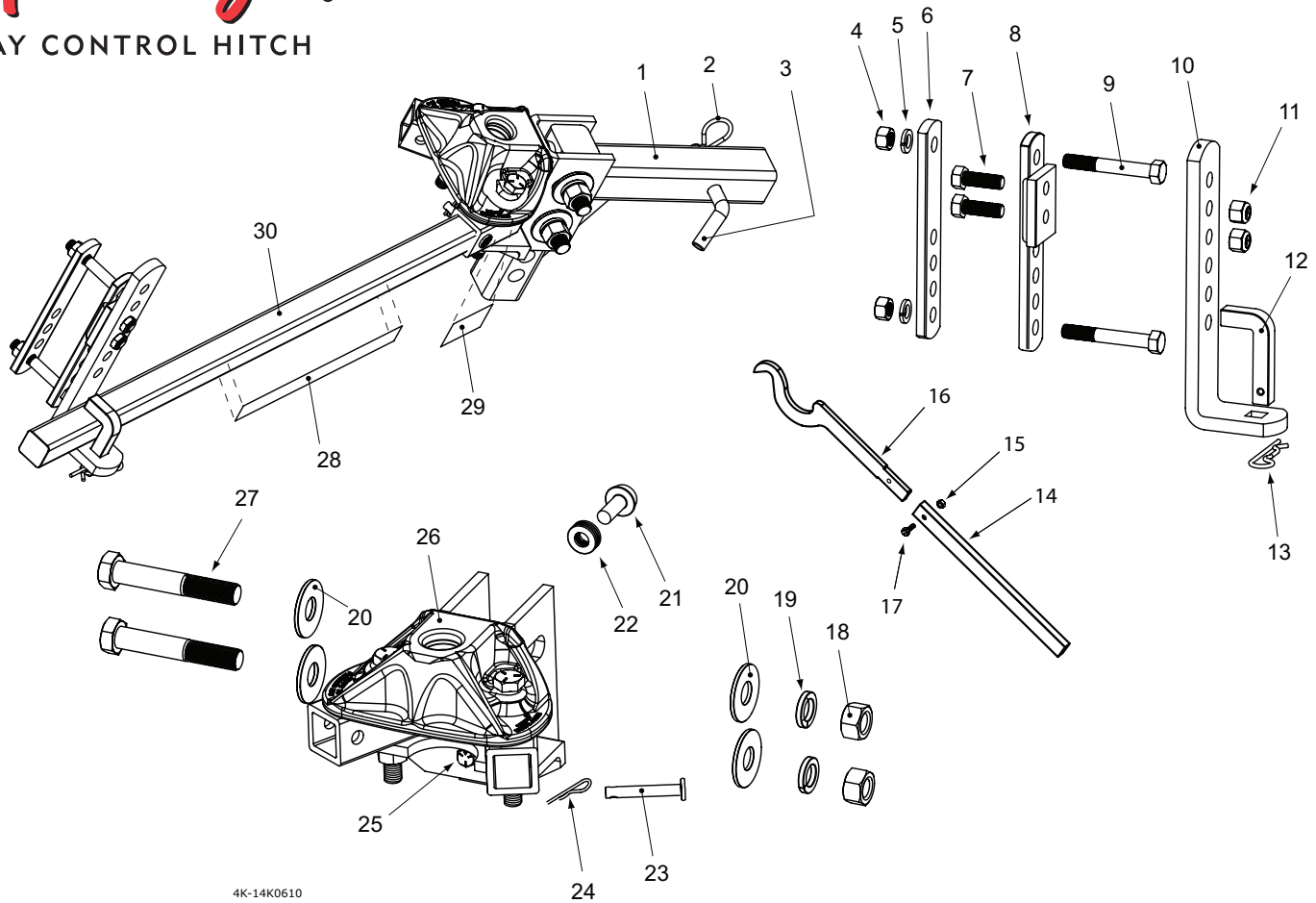


THE ORIGINAL
Equal-i-zer[®]
SWAY CONTROL HITCH

Parts Breakdown Models 6K - 14K



4K-14K0610

| Item # | Part Number | Part Description | Qty. |
|--------|-------------|--------------------|------|
| 1 | 90-02-4100 | Adjustable Shank | 1 |
| 2 | 90-04-9224 | Hitch Pin Clip | 1 |
| 3 | 90-03-9220 | Hitch Pin | 1 |
| 4 | 90-04-9228 | 1/2" Nut | 4 |
| 5 | 90-04-9290 | 1/2" Lock Washer | 4 |
| 6 | 90-02-5200 | Inside Link Plate | 2 |
| 7 | 90-04-9281 | 1/2" x 1-1/2" Bolt | 4 |
| 8 | 90-02-5350 | Outside Link Plate | 2 |
| 9 | 90-04-9270 | 1/2" x 3-1/2" Bolt | 4 |
| 10 | 90-02-5150 | L-Bracket | 2 |
| 11 | 90-04-9286 | Nylock Jam Nut | 4 |
| 12 | 90-03-9204 | L-Pin | 2 |
| 13 | 90-04-9208 | L-Pin Clip | 2 |
| 14 | 90-03-6200 | Snap-up Handle | 1 |
| 15 | 90-04-9244 | 1/4" Snap-up Nut | 1 |
| 16 | 90-03-6100 | Snap-up Hook | 1 |
| 17 | 90-04-9240 | 1/4" Snap-up Bolt | 1 |
| 18 | 90-04-9126 | 3/4" Nut | 2 |
| 19 | 90-04-9120 | 3/4" Lock Washer | 2 |
| 20 | 90-04-9115 | 3/4" Washer | 4 |

continued

| | | | |
|-----|--|---|---|
| 21 | 90-03-9105 | Spacer Rivet | 1 |
| 22 | 90-04-9110 | Spacer Washer | 6 |
| 23 | 90-03-9212 | Socket Pin | 2 |
| 24 | 90-04-9216 | Socket Pin Clip | 2 |
| 25 | 90-03-9700 | Angle Set Bolt | 1 |
| 26 | 90-02-0600 90-02-1000 90-02-1200 90-02-1400 | 600 / 6,000 lb. head 1,000 / 10,000 lb. head 1,200 / 12,000 lb. head 1,400 / 14,000 lb. head | 1 |
| 27 | 90-04-9131 | 3/4" x 5" Bolt | 2 |
| 28 | BD064 BD104 BD124 BD144 | Arm Warning Stickers 6,000 lb. arm sticker 10,000 lb. arm sticker 12,000 lb. arm sticker 14,000 lb. arm sticker | 2 |
| 29 | BD035 | Socket Warning Sticker | 2 |
| 30* | 90-02-0699 90-02-1099 90-02-1299 90-02-1499 | 6,000 lb. Spring Arm 10,000 lb. Spring Arm 12,000 lb. Spring Arm 14,000 lb. Spring Arm | 2 |